

Legend

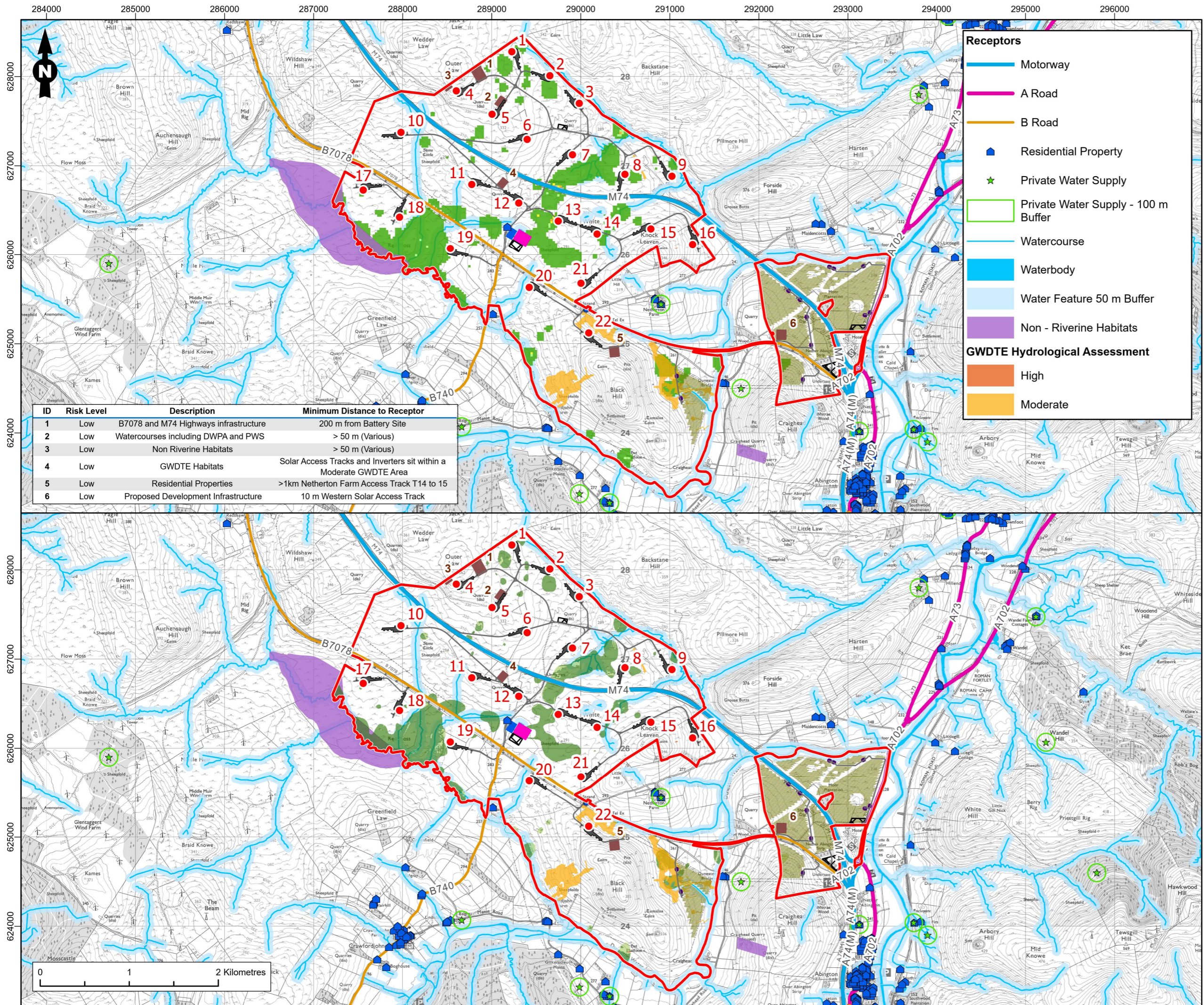
- Site Boundary
- Turbines
- Solar PV Modules
- Inverter
- Substation
- Construction Compound
- Battery Site
- Borrow Pit Location
- Turbine Hardstanding Concrete
- Access Track, Junction & Turning Heads

Summed Score / Likelihood Score

- 2 - 6 (Very Low, 1)
- 7 - 11 (Low, 2)
- 12 - 16 (Moderate, 3)
- 22 - 24 (Very High, 5)

Figure Title	
Peat Slide Likelihood	
Project Name	
M74 West Renewable Energy Park	
Project Number	Figure No.
1620015684	8.3.8
Date	Prepared By
August 2024	BE
Scale	Issue
1:22,500 @A3	1
Client	
M74 West Ltd	





- Receptors**
- Motorway
 - A Road
 - B Road
 - Residential Property
 - Private Water Supply
 - Private Water Supply - 100 m Buffer
 - Watercourse
 - Waterbody
 - Water Feature 50 m Buffer
 - Non - Riverine Habitats
- GWDE Hydrological Assessment**
- High
 - Moderate

ID	Risk Level	Description	Minimum Distance to Receptor
1	Low	B7078 and M74 Highways infrastructure	200 m from Battery Site
2	Low	Watercourses including DWPA and PWS	> 50 m (Various)
3	Low	Non Riverine Habitats	> 50 m (Various)
4	Low	GWDE Habitats	Solar Access Tracks and Inverters sit within a Moderate GWDE Area
5	Low	Residential Properties	>1km Netherton Farm Access Track T14 to 15
6	Low	Proposed Development Infrastructure	10 m Western Solar Access Track

- Legend**
- Site Boundary
 - Turbines
 - Solar PV Modules
 - Inverter
 - Substation
 - Construction Compound
 - Battery Site
 - Borrow Pit Location
 - Turbine Hardstanding Concrete
 - Access Track, Junction & Turning Heads
- Factor of Safety**
- 1.0 - 1.4 (marginally unstable)
 - 1.4 - 2.0 (stable)
 - 2.0 - 3.0 (stable)
 - >3.0 (stable)
- Summed Score / Likelihood Score**
- 2 - 6 (Very Low, 1)
 - 7 - 11 (Low, 2)
 - 12 - 16 (Moderate, 3)
 - 22 - 24 (Very High, 5)

Figure Title
Distance from Receptors

Project Name
M74 West Renewable Energy Park

Project Number 1620015684	Figure No. 8.3.9
Date August 2024	Prepared By BE
Scale 1:40,000 @A3	Issue 1

Client
M74 West Ltd