



Renewco

P O W E R

RAVENGILL ENERGY PARK EXHIBITION

Welcome to the first public consultation event for the Ravengill Energy Park ('the Proposed Development').

The purpose of today's event is to provide you with information about the Proposed Development and gather feedback. Representatives from Renewco Power, supported by our Environmental Impact Assessment (EIA) team from Ramboll and landscape and visual impact specialists MVGLA, are available to discuss the project and answer your questions.

The contents of the remaining information banners are summarised below.

- **Banner 2:** The Development Site (overview of the site and project)
- **Banner 3:** Project Development (how the project has developed and next steps)
- **Banner 4:** Preparing for a Section 36 Consent Application (what further work is required to prepare a consent application)
- **Banner 5:** Working with the Community (our approach to community benefits)
- **Banner 6:** Project Timeline
- **Banner 7:** Feedback and Next Steps (how to provide feedback and next steps in project development)
- **Banner 8:** Who is Ravengill Energy Park Limited? (overview of the developer of the Proposed Development)
- **Banner 9:** Our M74 Corridor Strategy (Renewco Power's plans for development in the vicinity of the M74)

Scan QR code to access
the project website





Renewco

P O W E R

THE DEVELOPMENT SITE

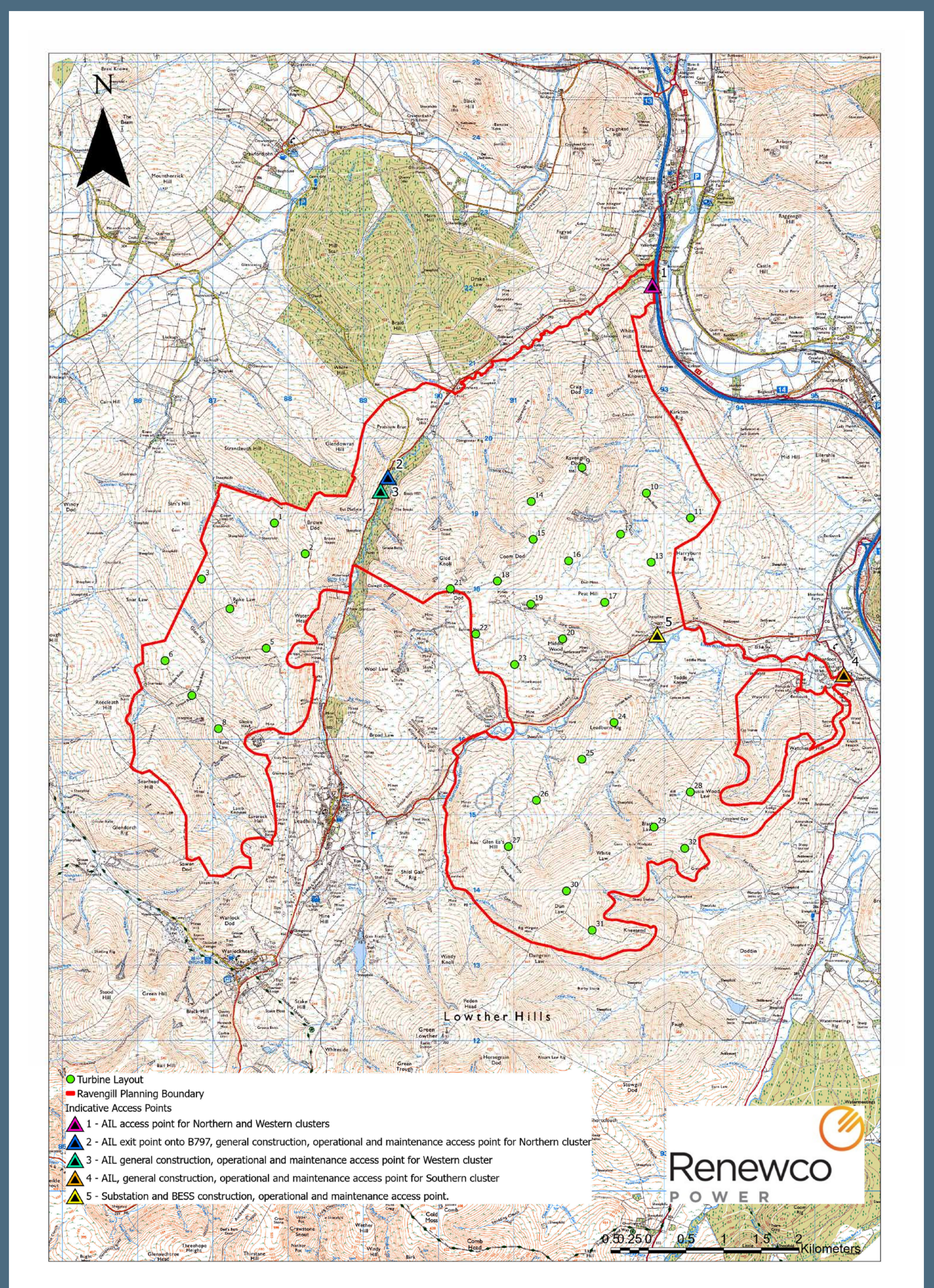
LOCATION

The Site, covering an area of approximately 3789 (ha), is located north of Leadhills village, south of Abington village and west of the A74(M) motorway. The Site is within the administrative boundary of South Lanarkshire Council.

THE PROJECT

The project is at the early stages of development and at this stage is anticipated to include:

- up to 32 wind turbines, with a height of up to 220 m to tip
- Battery Energy Storage System (BESS), with a capacity of approximately 50 MW
- onsite substation co-located with the BESS
- internal access tracks
- construction compound, laydown areas and borrow pits
- temporary construction access from M74 for turbine deliveries to northern and western clusters, access via A702 for southern cluster
- construction and operational and maintenance access from B797 and A702



The project has a contracted grid connection to the Elvanfoot Substation to the immediate east of the site. The connection from the project substation to Elvanfoot Substation is anticipated to be by an underground cable and will be subject to a separate consent application by Scottish Power Energy Networks (SPEN).

A request for an Environmental Impact Assessment (EIA) Scoping Opinion from Scottish Ministers has been submitted. This seeks a view from Scottish Ministers, with input from relevant authorities, on which environmental issues should be addressed by the EIA which will guide the ongoing development of the project. The findings will be reported in an EIA Report which will form part of the Section 36 application for development consent.

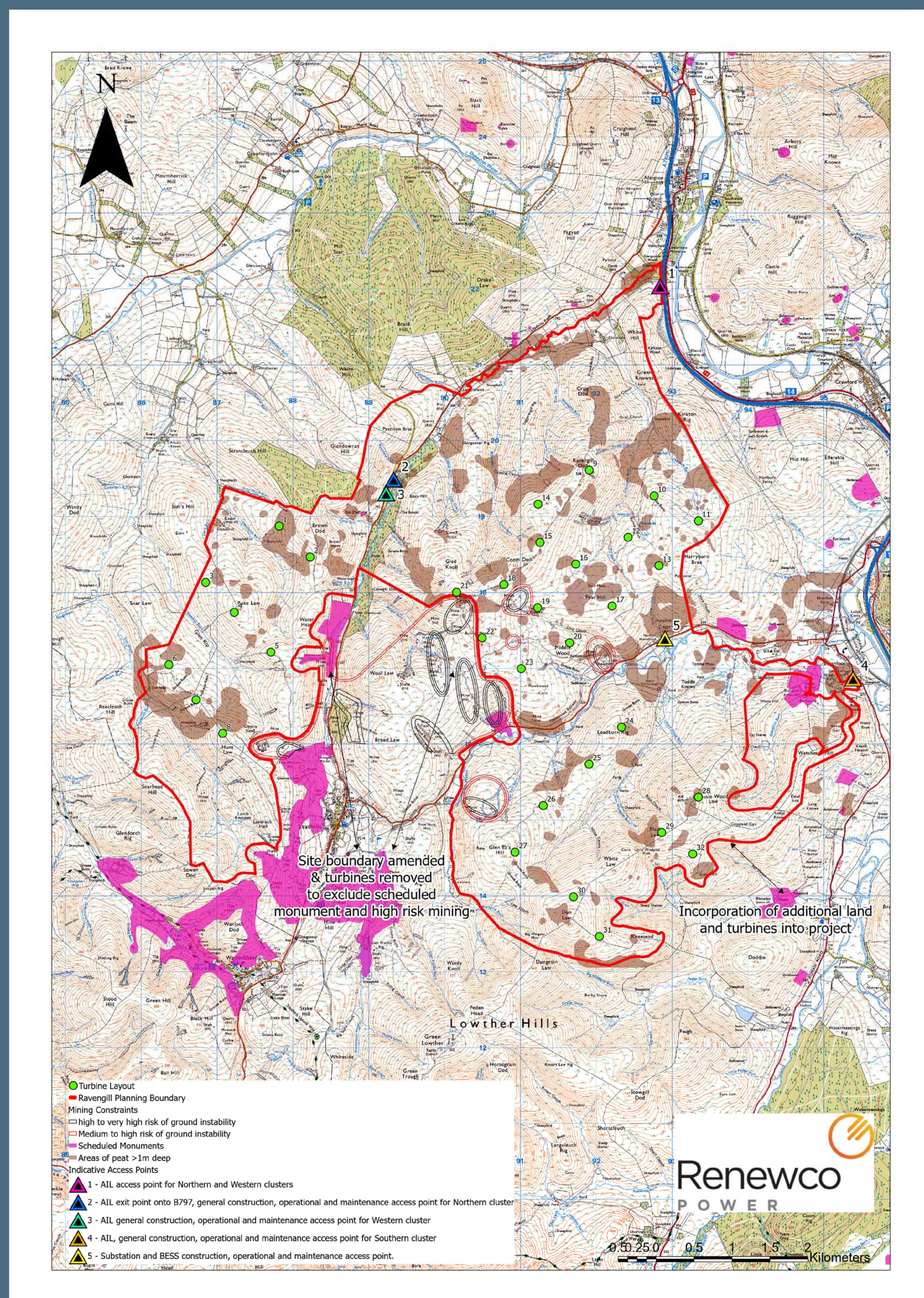




Renewco

P O W E R

PROJECT DEVELOPMENT



Early engagement with stakeholders took place in mid-2024 and at that point a layout comprising 30 turbines, up to 125 MW of ground mounted solar PV, and an approximately 50 MW BESS was under consideration.

Since then, significant survey and design work has been undertaken to arrive at the current proposed development comprising up to 32 turbines and a 50 MW BESS, including:

- changes to the red line boundary to set development further back from Leadhills village, avoid land impacted by historic mining and to include additional land to the southeast
- removal of solar PV from consideration
- revision of turbine layout in response to findings of extensive survey work including: peat probing, habitat and protected species surveys, bird surveys, historic environment review, transport review, mining risk assessment
- identification of access points for component deliveries and general construction, operation and maintenance traffic





Renewco

P O W E R

PREPARING FOR A SECTION 36 CONSENT APPLICATION

An application for Section 36 Consent from Scottish Ministers is being prepared for submission in early 2026. Some key next steps to prepare for a Section 36 consent application are to:

- address comments submitted as part of the public consultation process;
- carry out further environmental surveys – including more detailed peat surveys and noise monitoring;
- further develop the turbine layout in response to consultee feedback and environmental sensitivities including:
 - key views from surrounding settlements, landmark hills and transport corridors;
 - the settings of designated cultural heritage assets in the surrounding area;
 - the findings of noise modelling using noise monitoring data;
 - water supply sources;
 - sensitive ecological habitats; and
 - both breeding and non-breeding birds, including consideration of disturbance and collision risk.
- finalise the development including design of the track layout, selection of borrow pit search areas, confirmation of substation and BESS location, confirmation of access routes and access points, and identification of suitable construction compound locations;
- complete the detailed assessment of the impact of the final layout of the development and prepare the EIA Report documenting the process undertaken and findings of the EIA.





Renewco

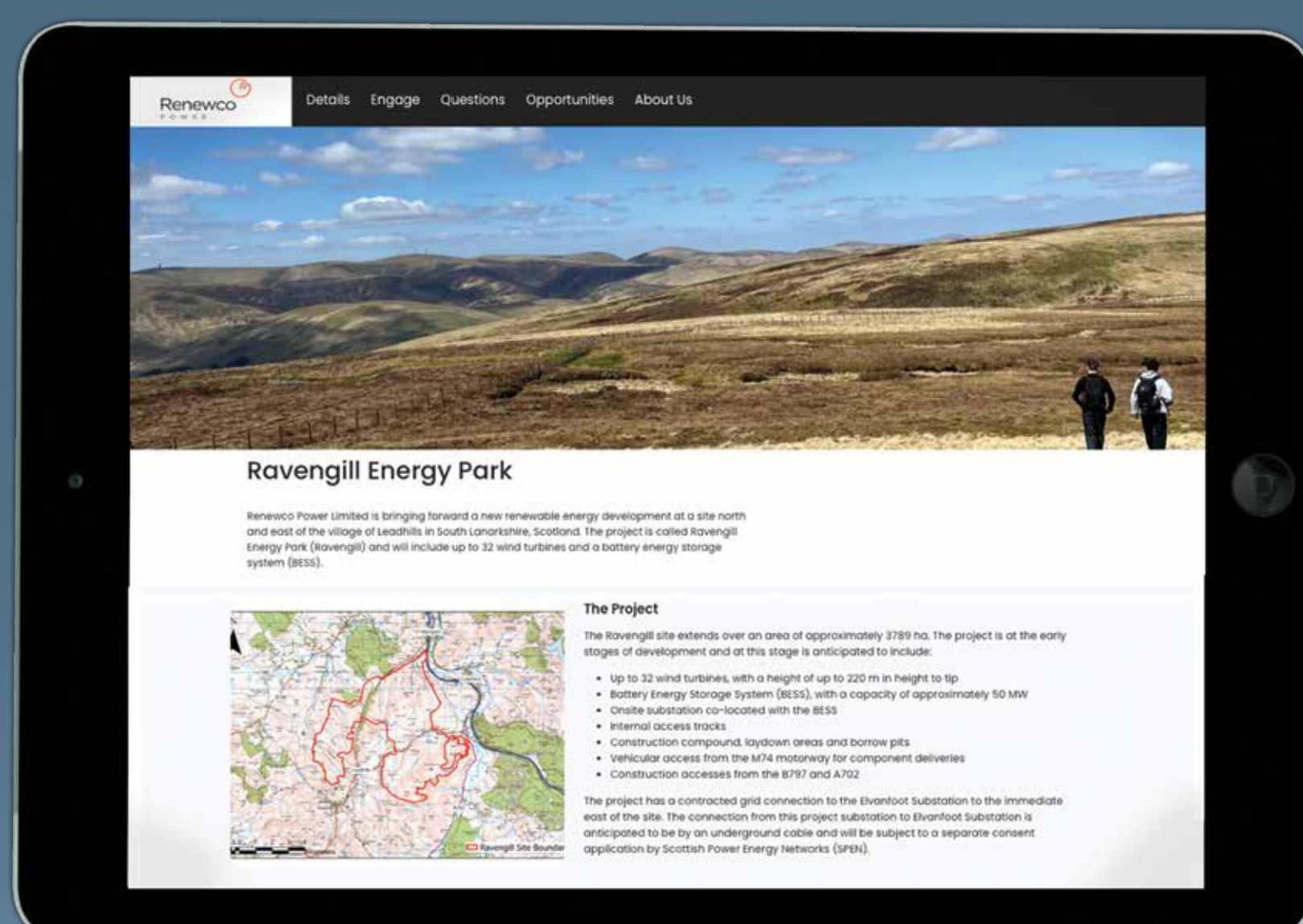
P O W E R

WORKING WITH THE COMMUNITY

Ravengill Energy Park will provide a range of benefits for the local community, including a fund which will deliver direct investment into community projects and initiatives. The fund will reflect Scottish Government best practice guidance. For example, should the wind aspect of the development have an installed capacity of 224 MW, the Proposed Development would provide a minimum of £1.12 million annually in community benefits. To guide this investment to the most appropriate projects and initiatives, seven high-level investment priorities have been identified, including:

- education and skills;
- health and wellbeing;
- economy and jobs;
- environment;
- culture and heritage;
- facilities and amenities; and
- transport

In advance of the Proposed Development being delivered, a Small Grants Fund of £5,000 is being launched to help support local initiatives and test a new engagement platform, AssetFace. The AssetFace platform has been developed by software developers BizGive, and will allow you provide feedback on the investment priorities and submit your ideas on the kinds of projects and initiatives that would benefit the local community. You can also highlight businesses that could benefit from expenditure associated with delivering Ravengill Energy Park.



Scan QR code to access the AssetFace



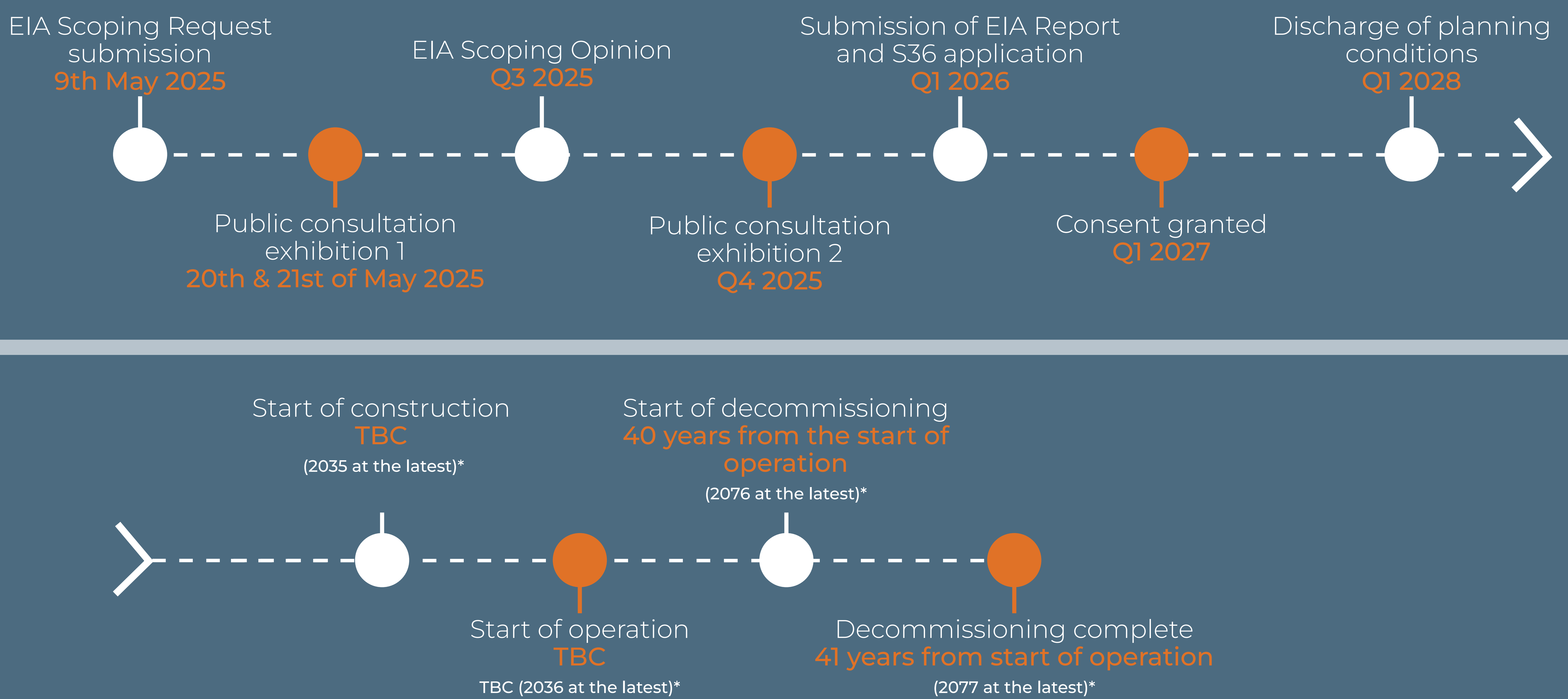


Renewco

P O W E R

PROJECT TIMELINE

Ravengill Energy Park will have a generating capacity of >50 MW and so will require consent under Section 36 of the Electricity Act 1989. This consenting process is administered by Scottish Ministers through the Energy Consents Unit (ECU) of the Scottish Government. The project requires an Environmental Impact Assessment (EIA), and this process will strongly influence the ongoing design work. The EIA process will result in an EIA Report which will document the findings of the assessments completed, provide environmental information for the project, and form a key element of the Section 36 consent application.



** Under ongoing reforms to how entry of new connections to the national grid is managed, it is expected that the Ravengill Energy Park will be able to connect to the grid earlier than the 2036 date currently contracted.*

renewco**power**.com





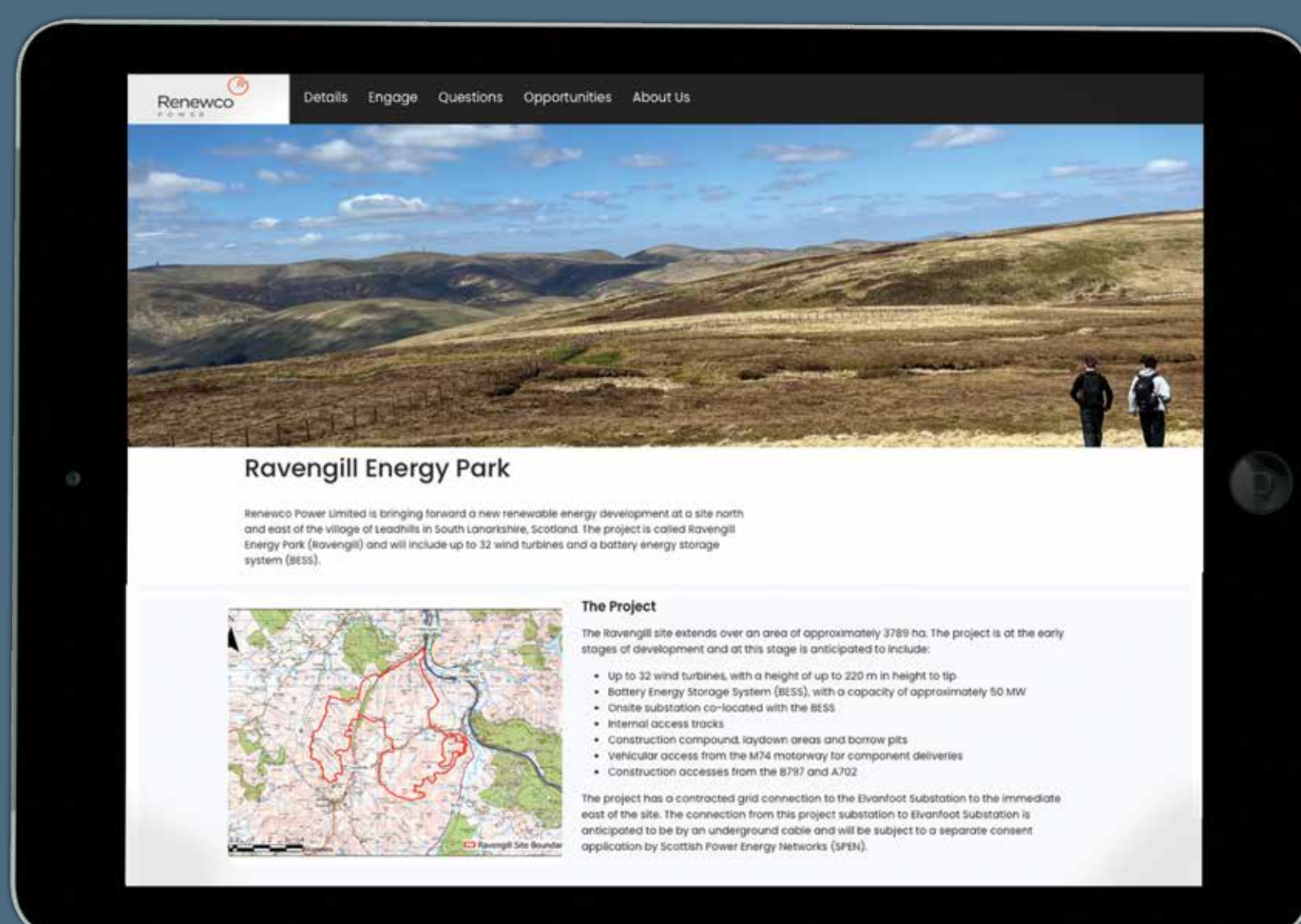
Renewco

P O W E R

FEEDBACK & NEXT STEPS

YOUR FEEDBACK

To help us take your views into account in the development of the Ravengill Energy Park, including the community benefit package, we would appreciate if you could provide feedback via our AssetFace site. You can also use the AssetFace platform to apply for funding for local initiatives from the Ravengill Small Grants Fund.



Scan QR code to access the Asset Face



Alternatively, we have feedback forms available for you to complete and hand to a member of the project team.

We would appreciate if you could provide feedback by 11 June.

NEXT STEPS

A further community engagement event will take place before the S36 application is submitted, where we will provide further detail on the Proposed Development including how feedback from this event and input from South Lanarkshire Council, SEPA, NatureScot, Historic Environment Scotland and others has been taken into account. The project team will also engage with community bodies during the intervening period.

CONTACT US AT:

RAVENGILL@RENEWCOPOWER.COM

WWW.RENEWCOPOWER.COM

Scan QR code to access the project website





Renewco

P O W E R

WHO IS RAVENGILL ENERGY PARK LTD?

Ravengill Energy Park Ltd is a wholly owned subsidiary of Renewco Power Ltd. Renewco Power is a Glasgow-headquartered renewable energy developer dedicated to developing onshore wind, solar photovoltaic (PV), battery energy storage systems (BESS) and green hydrogen projects across Europe and the US. With over 50 employees, Renewco's mission is to accelerate the deployment of clean energy by delivering 5 GW of construction ready projects across Europe and the US by 2030. The company was formed by a highly experienced team of entrepreneurs and renewable sector specialists with significant development, technical, project structuring, construction, and financing expertise across all renewable technologies.

While Renewco Power is a relatively new company, our team has a proven track record, delivering renewable energy projects in the UK and beyond. Our experience includes wind, solar, BESS, and emerging technologies such as green hydrogen.

Our aim with all of our projects is to maximise the renewable potential deliverable on a site while minimising impacts to land and the surrounding community. Irrespective of the technology our relationships with the community are critical to ensure we make a lasting positive impact, which is why we would welcome any and all feedback as part of this consultation.

renewcopower.com

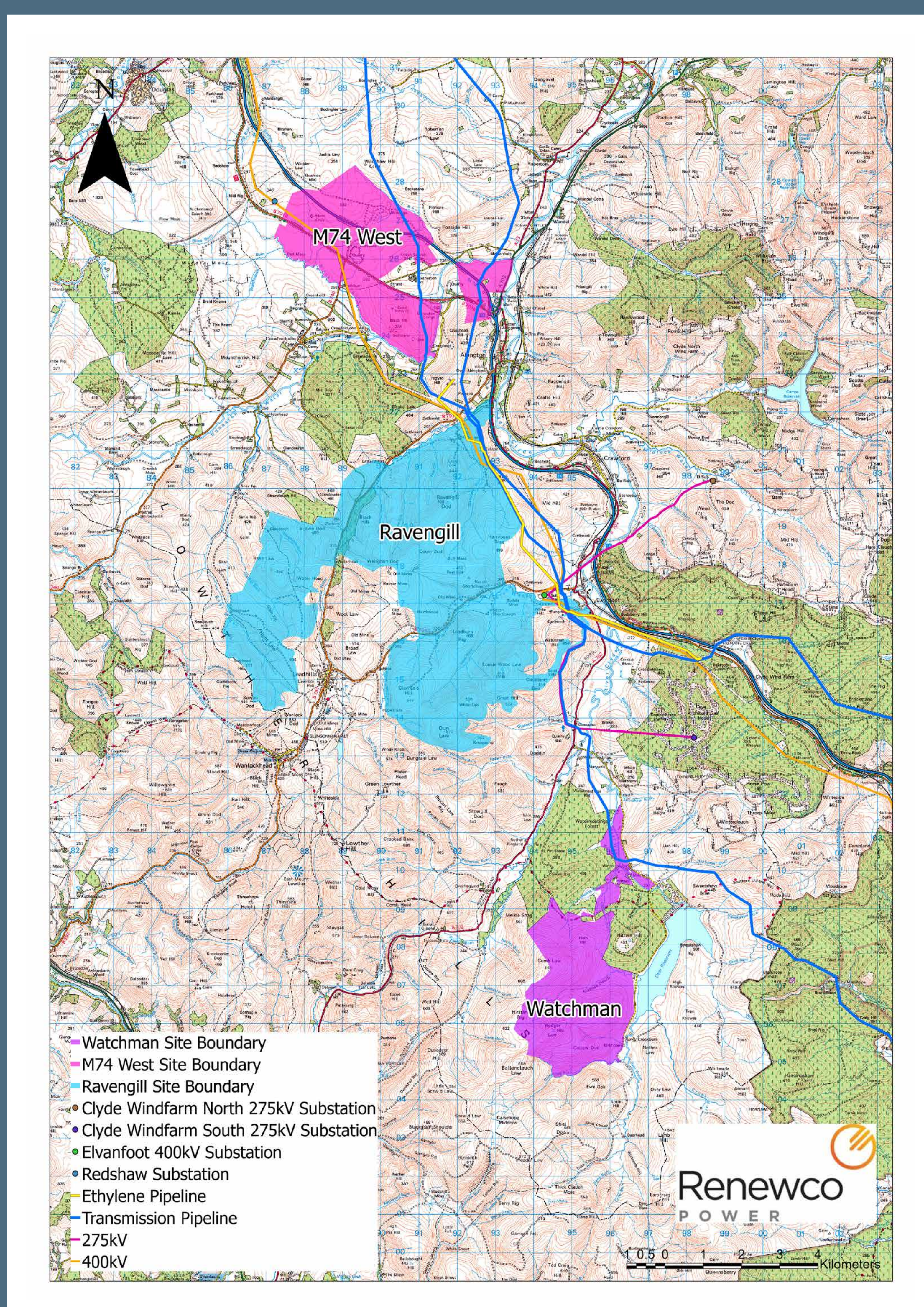




Renewco

P O W E R

OUR M74 CORRIDOR STRATEGY



Ravengill Energy Park forms part of Renewco's wider strategy to deliver new renewable energy assets in the vicinity of the M74 motorway. We consider that there are several strategic advantages to development in this area, including:

- access to the 400 kV ZV Overhead Line;
- proximity to the motorway network for the delivery of components to site and access to labour;
- consistently high wind speeds which will enable the export of large amounts of renewable energy to the grid;
- low population density which means that impacts on the amenity of householders, through issues such as noise and visual impacts, can be minimised;
- the large scale character of the landscape which is generally suitable to accommodate large modern, commercial wind turbines;
- the projects will create a cluster of developments in the area along the M74 corridor, considered to be an appropriate location, which allows the most sensitive landscapes and habitats elsewhere to be protected whilst facilitating the pooling of investment to provide strategic benefits for local communities;
- developments in this area will help deliver Scottish and UK Government targets for the deployment of renewable energy and reducing carbon emissions, with Ravengill Energy Park alone expected to produce enough energy to power the equivalent of approximately 231,846 homes.