

## WATCHMAN ENERGY PARK

Welcome to the second public consultation event for the Watchman Energy Park ('the Proposed Development').

The purpose of today's event is to provide you with information about the Proposed Development, including updates following our last consultation event in December 2024, and gather feedback. Representatives from Renewco Power, supported by our Environmental Impact Assessment (EIA) team from Ramboll and landscape and visual impact specialists MVGLA, are available to discuss the project and answer your questions.

The contents of the remaining information banners are summarised below:

- Banner 2: The Development Site (overview of the site and project)
- Banner 3: Project Development (how the project has developed since our last event)
- Banner 4: Substation, Battery Energy Storage and Site Compound (overview of substation, battery and main construction compound)
- Banner 5: Biodiversity Enhancement
  - (outline proposals for the enhancement of biodiversity)
- Banner 6: Working with the Community (our approach to community benefits)
- Banner 7: Project Timeline
- Banner 8: Feedback and Next Steps (how to provide feedback and next steps in project progress)
- Banner 9: Who is Watchman Energy Park Limited? (overview of the developer of the Proposed Development)
- Banner 10: Our M74 Corridor Strategy (Renewco Power's plans for development in the vicinity of the M74)

Scan QR code to access  
the project website





# Renewco POWER

## THE DEVELOPMENT SITE

### LOCATION

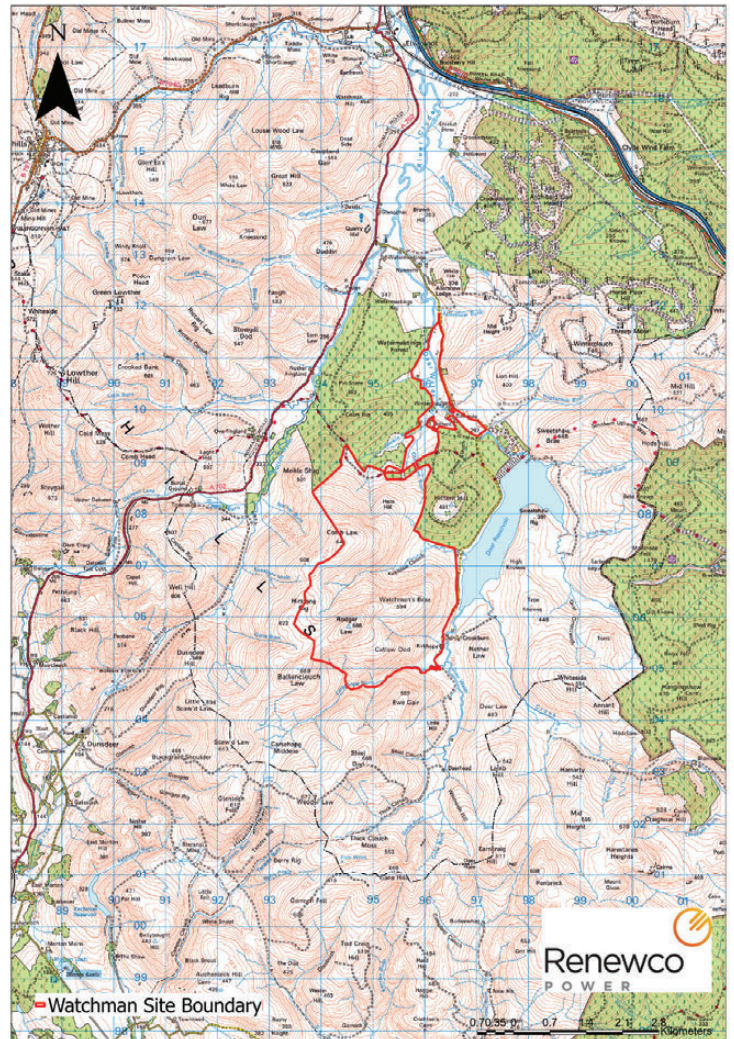
The 'Site' covers an area of approximately 1070 hectares (ha). The Site is located approximately 7 km south of Elvanfoot and 10 km south of Crawford, between the valley of the Daer Water to the north, Daer Reservoir and commercial forestry to the east, open moorland of the Southern Uplands to the south, and further open moorland and commercial forestry with the A702 road beyond to the west. The Site is within the administrative boundary of South Lanarkshire Council.

### THE PROJECT

The updated proposals for the Watchman Energy Park include:

- up to 13 wind turbines, with a height of up to 240 m to tip
- Battery Energy Storage System (BESS), with a capacity of approximately 50 MW
- onsite substation co-located with the BESS
- internal access tracks
- construction compound and borrow pit search areas
- options for vehicular access for component deliveries and general construction traffic from the public road network

The project has a contracted grid connection to the Elvanfoot Substation, located approximately 9km north of the turbine array of the project. The grid connection to Elvanfoot Substation will be subject to a separate consent application by Scottish Power Energy Networks (SPEN).



Scan QR code to access  
the project website



[renewcopower.com](https://renewcopower.com)





# Renewco

POWER

## PROJECT DEVELOPMENT





## PROJECT DEVELOPMENT

Since our first exhibition in December, there has been significant progress on the design of the project. The main areas of development and change are:

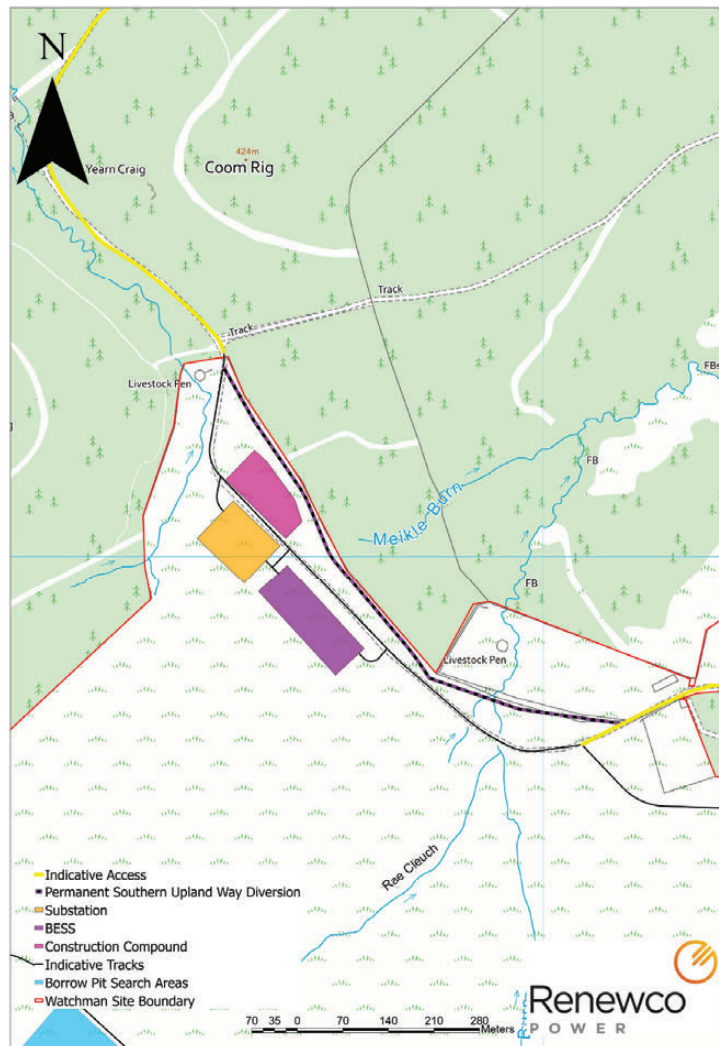
- reduction in the number of turbines from 16 to 13 in response to environmental and technical constraints
- identification of options for access from the public road
- initial layout of internal access tracks and other supporting infrastructure (e.g. borrow pit search areas and construction compound location)
- site selection and layout of the substation and BESS
- outline proposals for biodiversity mitigation and enhancement which will be delivered as part of the Outline Biodiversity Enhancement and Management Plan (OBEMP)





# Renewco POWER

## SUBSTATION, BATTERY ENERGY STORAGE & CONSTRUCTION COMPOUND



The on-site substation and BESS is proposed to be located in the north-western corner of the site, immediately south of the Southern Upland Way (SUW). This location has been chosen due to a combination of the relatively shallow slope, proximity to the grid connection at Elvanfoot and lack of environmental constraints.

The current proposal is to divert a short stretch (approx. 900 m) of the SUW within the site. This will ensure pedestrian safety during construction and creates an opportunity to provide screen planting around the substation and BESS compound to minimise its visual impact.



Renewco  
P O W E R

## BIODIVERSITY ENHANCEMENT & MANAGEMENT

An Outline Biodiversity Enhancement Management Plan is being prepared which will include a number of measures that will mitigate for habitat loss and ensure that the proposed development has an overall positive impact on biodiversity across the site. Draft measures under consideration at this stage include:

- works to improve peatland/moorland habitats, such as:
  - drain blocking
  - peat bank and gully reprofiling;
  - stock management; and
  - prohibition of certain activities within the peatland (e.g. peat cutting, planting, supplementary livestock feeding, drainage).
- woodland planting, including around the substation/BESS site, along commercial forestry edges and riparian planting along the Meikle Burn and Daer Water
- rewilding borrow pits
- wild flower planting
- habitat management to support breeding waders

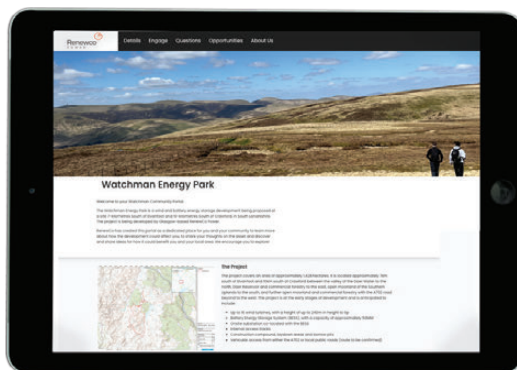
The current 'work in progress' map showing where these measures are being considered is available to review as a print out. Please speak to one of the Project Team if you would like to be directed to it.

## WORKING WITH THE COMMUNITY

The Proposed Development will provide a range of benefits for the local community, including a fund which will deliver direct investment into community projects and initiatives. The fund will reflect Scottish Government best practice guidance. For example, should the wind aspect of the development have an installed capacity of 91 MW, the Proposed Development would provide a minimum of £455,000 annually in community benefits. To guide this investment to the most appropriate projects and initiatives, seven high-level investment priorities have been identified:

- education and skills;
- health and wellbeing;
- economy and jobs;
- environment;
- culture and heritage;
- facilities and amenities; and
- transport

In advance of the Proposed Development being delivered, a Small Grants Fund of £5,000 has been launched to help support local initiatives and test a new engagement platform, Assetface. The Assetface platform has been developed by software developers BizGive, and will allow you provide feedback on the investment priorities and submit your ideas on the kinds of projects and initiatives that would benefit the local community. You can also highlight businesses that could benefit from expenditure associated with delivering Watchman Energy Park.



Scan QR code to access  
the Asset Face



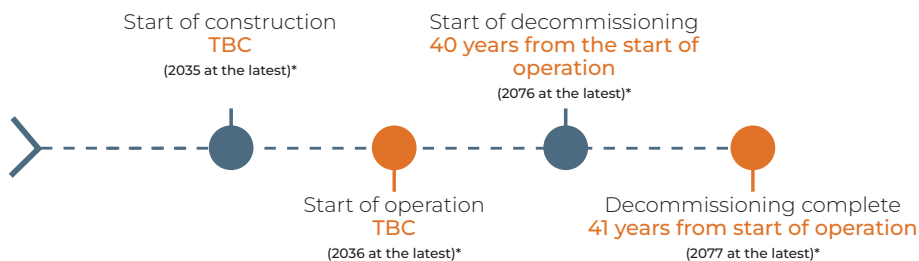


# Renewco

## P O W E R

## PROJECT TIMELINE

Watchman Energy Park will have a generating capacity of >50 MW and so will require consent under Section 36 of the Electricity Act 1989. This consenting process is administered by Scottish Ministers through the Energy Consents Unit (ECU) of the Scottish Government. The project requires an Environmental Impact Assessment (EIA), and this process will strongly influence the ongoing design work. The EIA process will result in an EIA Report which will document the findings of the assessments completed, provide environmental information for the project, and form a key element of the Section 36 consent application.



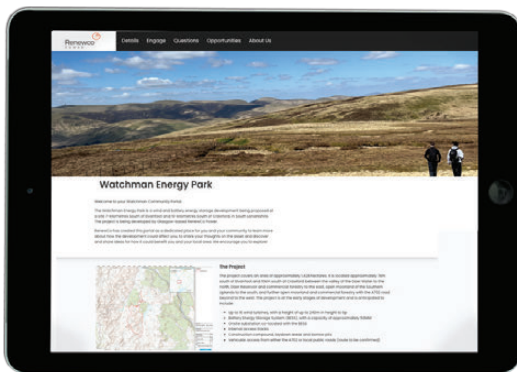
\* Under ongoing reforms to how entry of new connections to the national grid is managed, it is expected that the Watchman Project will be able to connect to the grid earlier than the 2036 date currently contracted.



## FEEDBACK & NEXT STEPS

### YOUR FEEDBACK

To help us take your views into account in the development of the Watchman Energy Park, including the community benefit package, we would appreciate if you could provide feedback via our AssetFace site. You can also use the AssetFace platform to apply for funding for local initiatives from the Watchman Small Grants Fund.



Scan QR code to access  
the Asset Face



Alternatively, we have feedback forms available for you to complete and hand to a member of the project team.

We would appreciate if you could provide feedback by 11 June 2025.

### NEXT STEPS

Our response to your feedback will be set out in a Pre-Application Consultation Report which will accompany a Section 36 Application submitted later this year. We will also look to engage directly with community bodies on the lead up to the application submission.

### CONTACT US AT:

**[watchman@renewcopower.com](mailto:watchman@renewcopower.com)**  
**[www.renewcopower.com](http://www.renewcopower.com)**



## WHO IS WATCHMAN ENERGY PARK LTD?

Watchman Energy Park Ltd is a wholly owned subsidiary of Renewco Power Ltd. Renewco Power is a Glasgow-headquartered renewable energy developer dedicated to developing onshore wind, solar Photovoltaic (PV), Battery Energy Storage Systems (BESS) and green hydrogen projects across Europe and the US. With over 50 employees, Renewco's mission is to accelerate the deployment of clean energy by delivering 5 GW of construction ready projects across Europe and the US by 2030. The company was formed by a highly experienced team of entrepreneurs and renewable sector specialists with significant development, technical, project structuring, construction, and financing expertise across all renewable technologies.

While Renewco Power is a relatively new company, our team has a proven track record, delivering renewable energy projects in the UK and beyond. Our experience includes wind, solar, BESS, and emerging technologies such as green hydrogen.

*Our aim with **all** of our projects is to maximise the renewable potential deliverable on a site while minimising impacts to land and the surrounding community. Irrespective of the technology our relationships with the community are critical to ensure we make a lasting positive impact, which is why we would welcome any and all feedback as part of this consultation.*



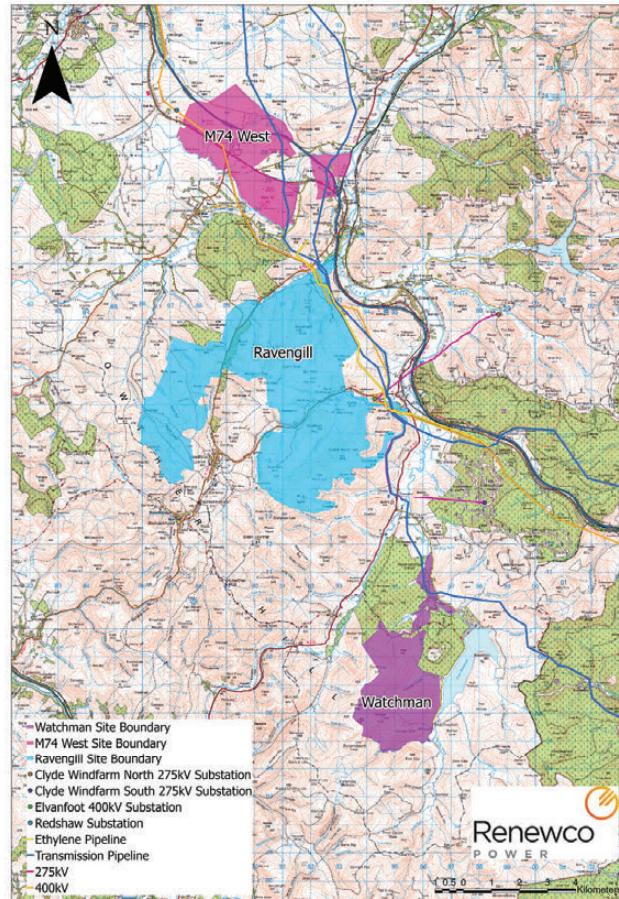
[renewcopower.com](https://renewcopower.com)



# Renewco

P O W E R

## OUR M74 CORRIDOR STRATEGY



Watchman Energy Park forms part of Renewco's wider strategy to deliver new renewable energy assets in the vicinity of the M74 motorway. We consider that there are several strategic advantages to development in this area, including:

- access to the 400 kV ZV Overhead Line;
- proximity to the motorway network for the delivery of components to site and access to labour;
- consistently high wind speeds which will enable the export of large amounts of renewable energy to the grid;
- low population density which means that impacts on the amenity of householders, through issues such as noise and visual impacts, can be minimised;
- the large scale character of the landscape which is generally suitable to accommodate large modern, commercial wind turbines;
- the projects will create a cluster of developments in the area along the M74 corridor, considered to be an appropriate location, which allows the most sensitive landscapes and habitats elsewhere to be protected whilst facilitating the pooling of investment to provide strategic benefits for local communities;
- developments in this area will help deliver Scottish and UK Government targets for renewable energy and reducing carbon emissions, with Watchman Energy Park expected to produce enough energy to power the equivalent of approximately 110,259 homes.

[renewcopower.com](https://renewcopower.com)