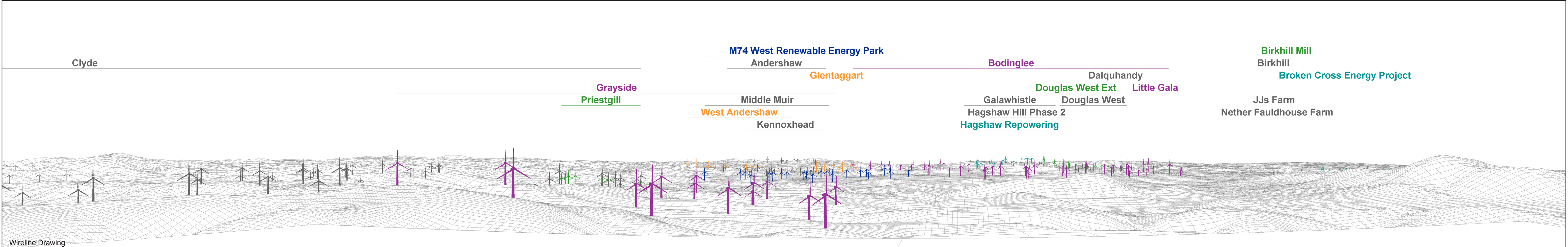


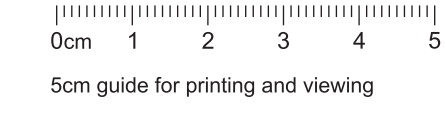
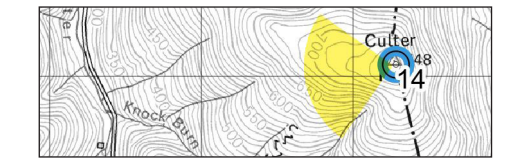


Baseline Photograph

This image provides landscape and visual context only



Wireline Drawing



- ✦ Proposal
- ✦ Application
- ✦ Scoping
- ✦ Existing
- ✦ Consented
- ✦ Under construction

OS Reference: 305286 629077  
 Eye Level: 743.56 m AOD  
 Direction of View: 260°  
 Distance to nearest turbine: 14338 m

Horizontal field of view: 90° (cylindrical projection)  
 Principal Distance: 522mm  
 Paper Size: 841 x 297 mm  
 Correct printed image size: 820 x 130mm

Camera: Canon EOS R5  
 Lens: 50mm  
 Camera Height: 1.5m AGL  
 Date and Time: 12/8/2024 12:46

**Figure: 4.27A**  
Viewpoint 14: Culter Fell



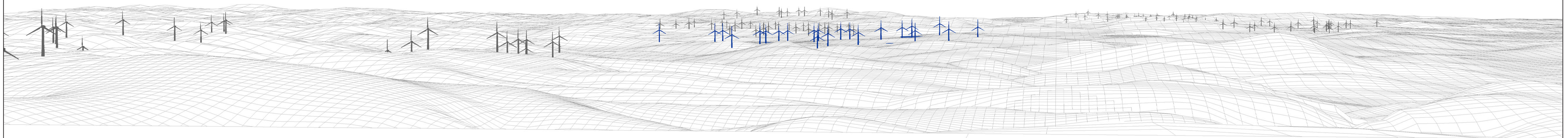
22 21 20 16 15 14 19 13 12 9 18 8 11 17 7 6 10 5 3 4 2 1

Clyde

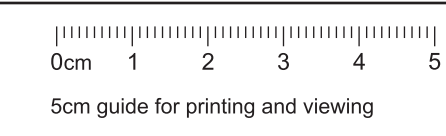
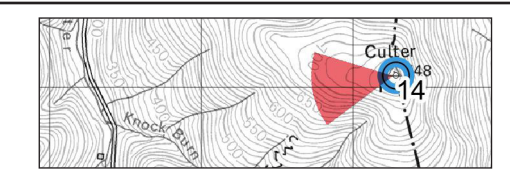
Andershaw  
Middle Muir  
Kennoxhead



Galawhistle  
Hagshaw Hill Phase 2

Dalquhandy  
Douglas West



Wireline Drawing



 Proposal  
 Existing

OS Reference: 305286 629077  
 Eye Level: 743.56 m AOD  
 Direction of View: 260°  
 Distance to nearest turbine: 14338 m

Horizontal field of view: 53.5° (planar projection)  
 Principal Distance: 812.5mm  
 Paper Size: 841 x 297 mm  
 Correct printed image size: 820 x 260mm

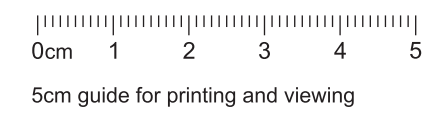
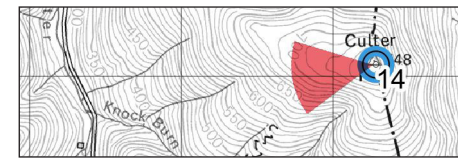
Camera: Canon EOS R5  
 Lens: 50mm  
 Camera Height: 1.5m AGL  
 Date and Time: 12/8/2024 12:46

**Figure: 4.27B**  
Viewpoint 14: Culter Fell





Photomontage



5cm guide for printing and viewing

OS Reference:	305286 629077	Horizontal field of view:	53.5° (planar projection)	Camera:	Canon EOS R5
Eye Level:	743.56 m AOD	Principal Distance:	812.5mm	Lens:	50mm
Direction of View:	260°	Paper Size:	841 x 297 mm	Camera Height:	1.5m AGL
Distance to nearest turbine:	14338 m	Correct printed image size:	820 x 260mm	Date and Time:	12/8/2024 12:46

**Figure: 4.27C**  
Viewpoint 14: Culter Fell